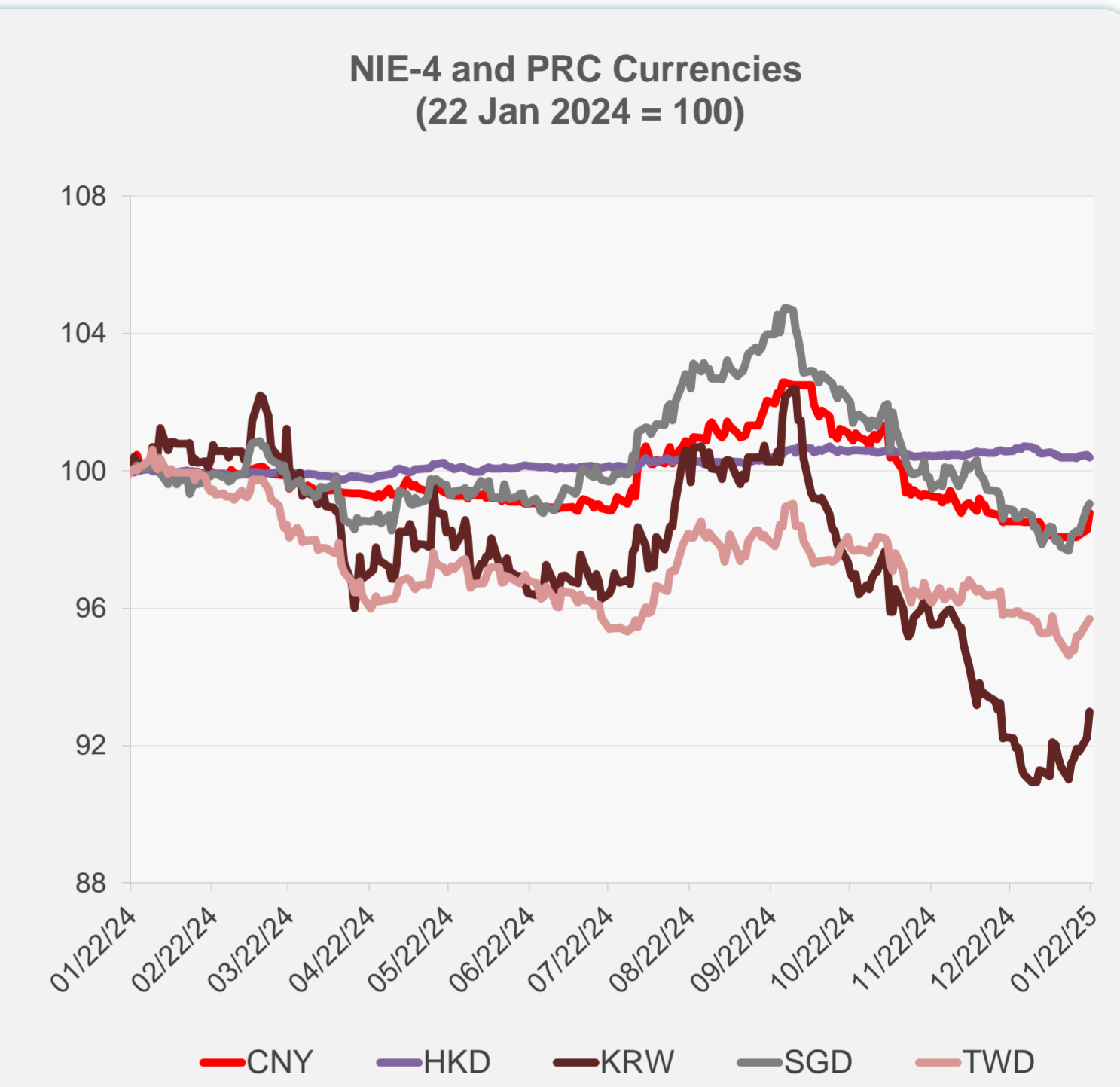
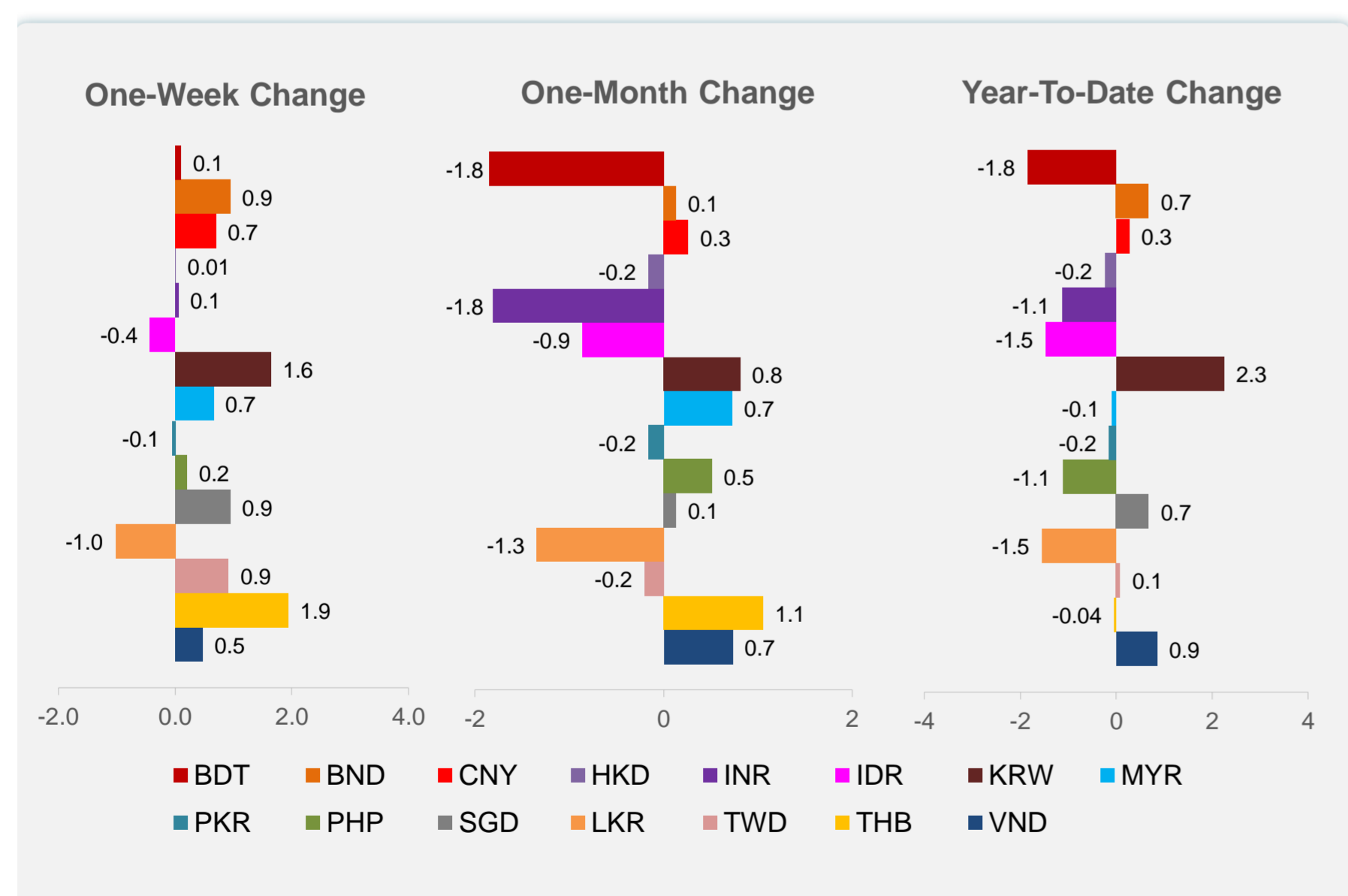
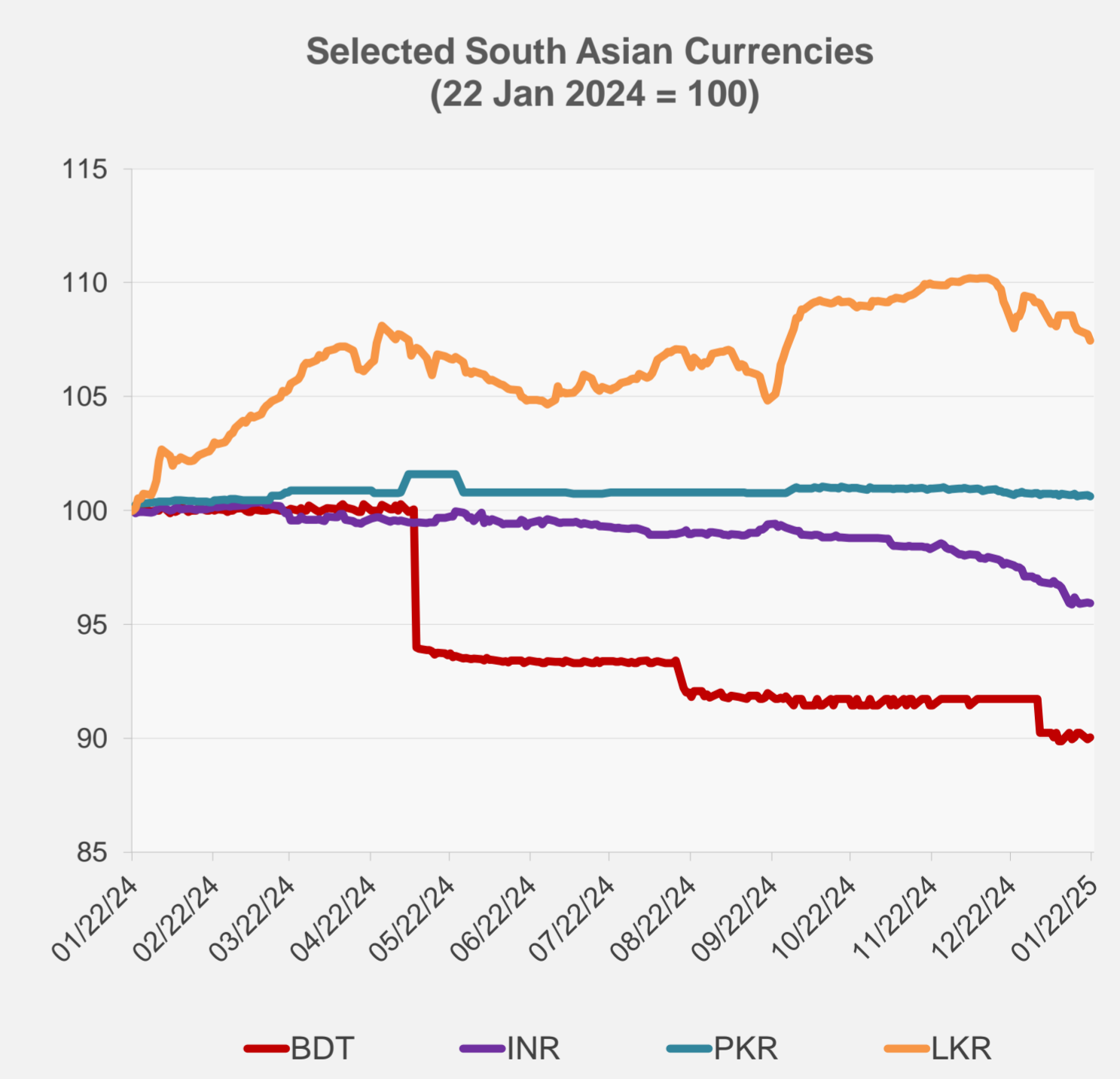
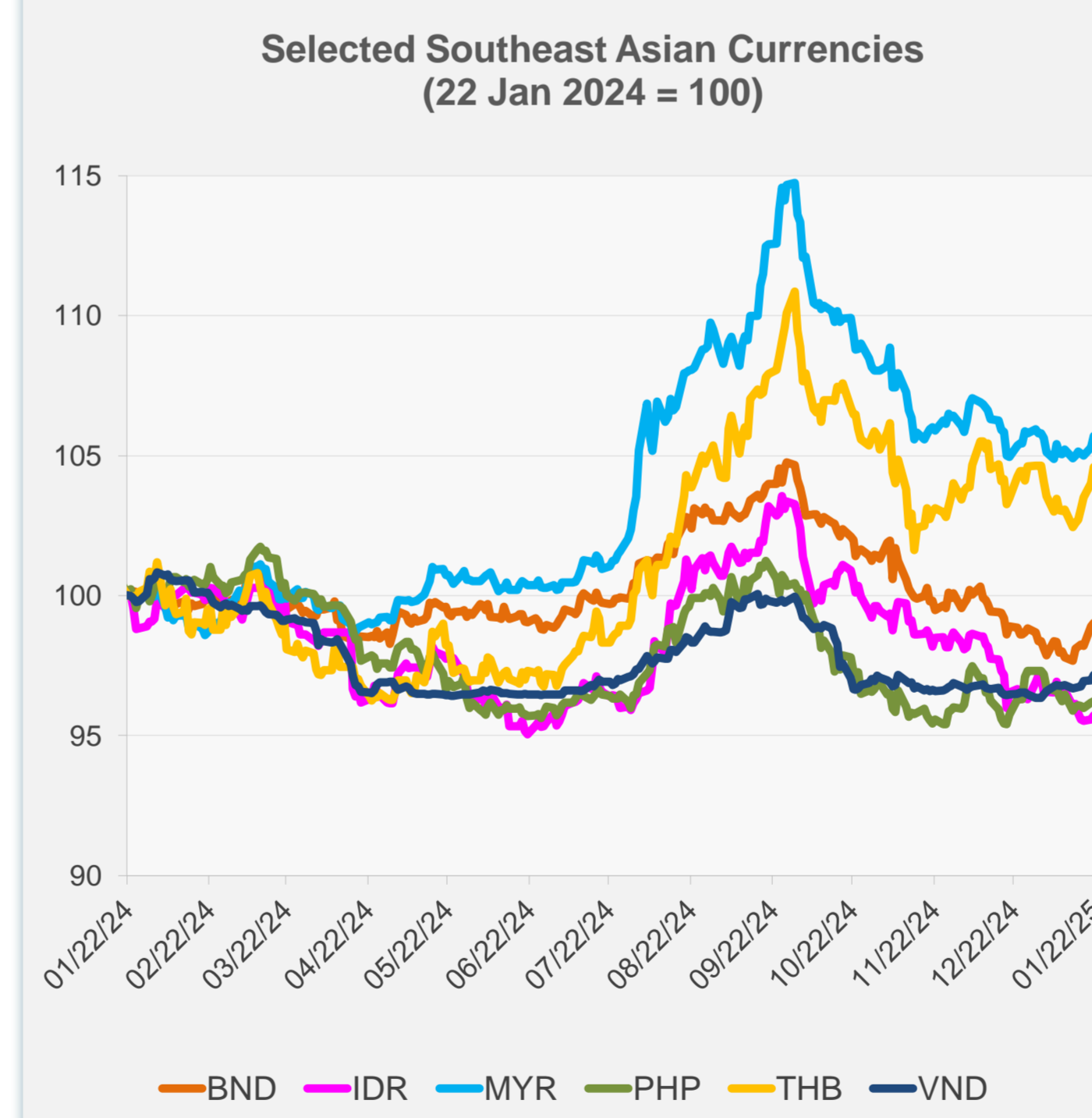


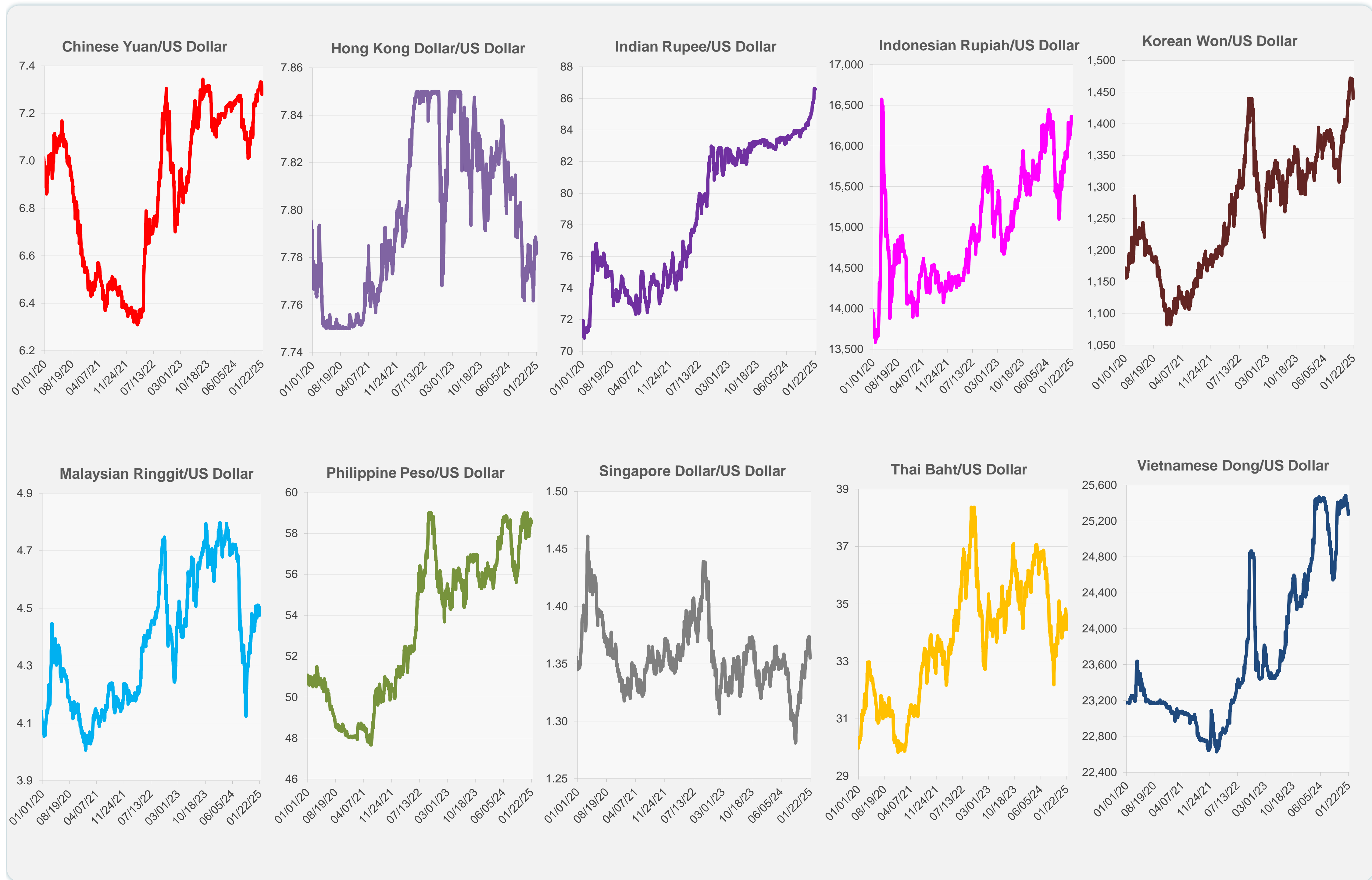
	Latest Closing	% change from Previous Day	% change from 01-Jan-25
Euro	0.96	0.00	0.44
Japanese yen (JPY)	155.30	0.25	1.20
Bangladeshi taka (BDT)	121.75	0.10	-1.85
Brunei dollar (BND)	1.36	0.13	0.68
Chinese yuan (CNY)	7.28	0.50	0.27
Hong Kong dollar (HKD)	7.79	-0.06	-0.24
Indian rupee (INR)	86.59	-0.03	-1.13
Indonesian rupiah (IDR)	16,335.00	0.15	-1.47
Korean won (KRW)	1,439.75	0.82	2.25
Malaysian ringgit (MYR)	4.48	0.39	-0.09
Pakistan rupee (PKR)	278.80	-0.04	-0.15
Philippine peso (PHP)	58.50	0.04	-1.11
Singapore dollar (SGD)	1.36	0.13	0.68
Sri Lanka rupee (LKR)	297.60	-0.25	-1.55
Taipei,China NT dollar (TWD)	32.76	0.12	0.08
Thai baht (THB)	34.11	0.54	-0.04
Vietnamese dong (VND)	25,270.00	0.21	0.85



NIE = Newly Industrialized Economies



Note: Negative/Decreasing values indicate depreciation of local currency, and positive/increasing values indicate appreciation.  
Source: ADB calculations using data from Haver Analytics.

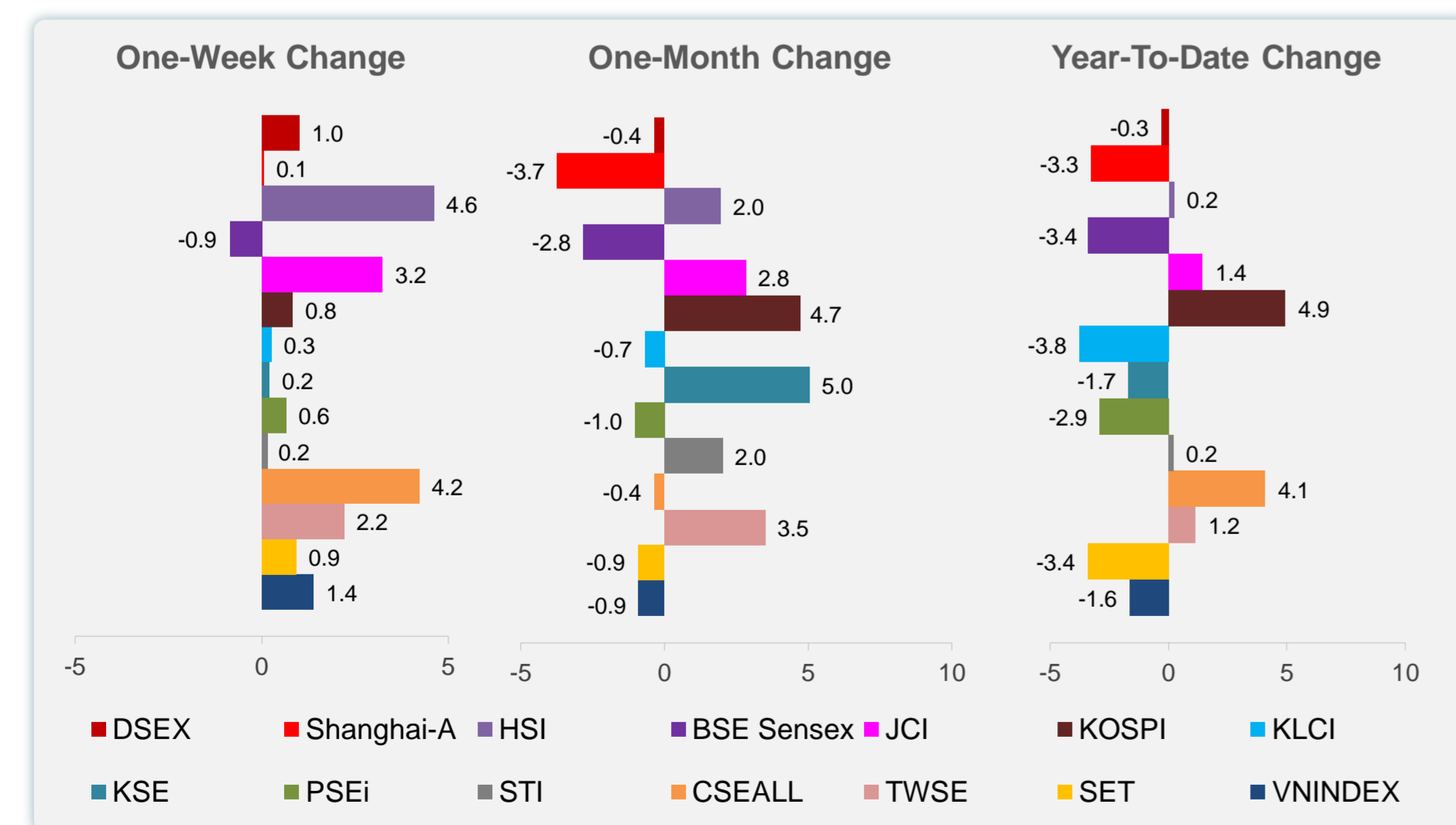
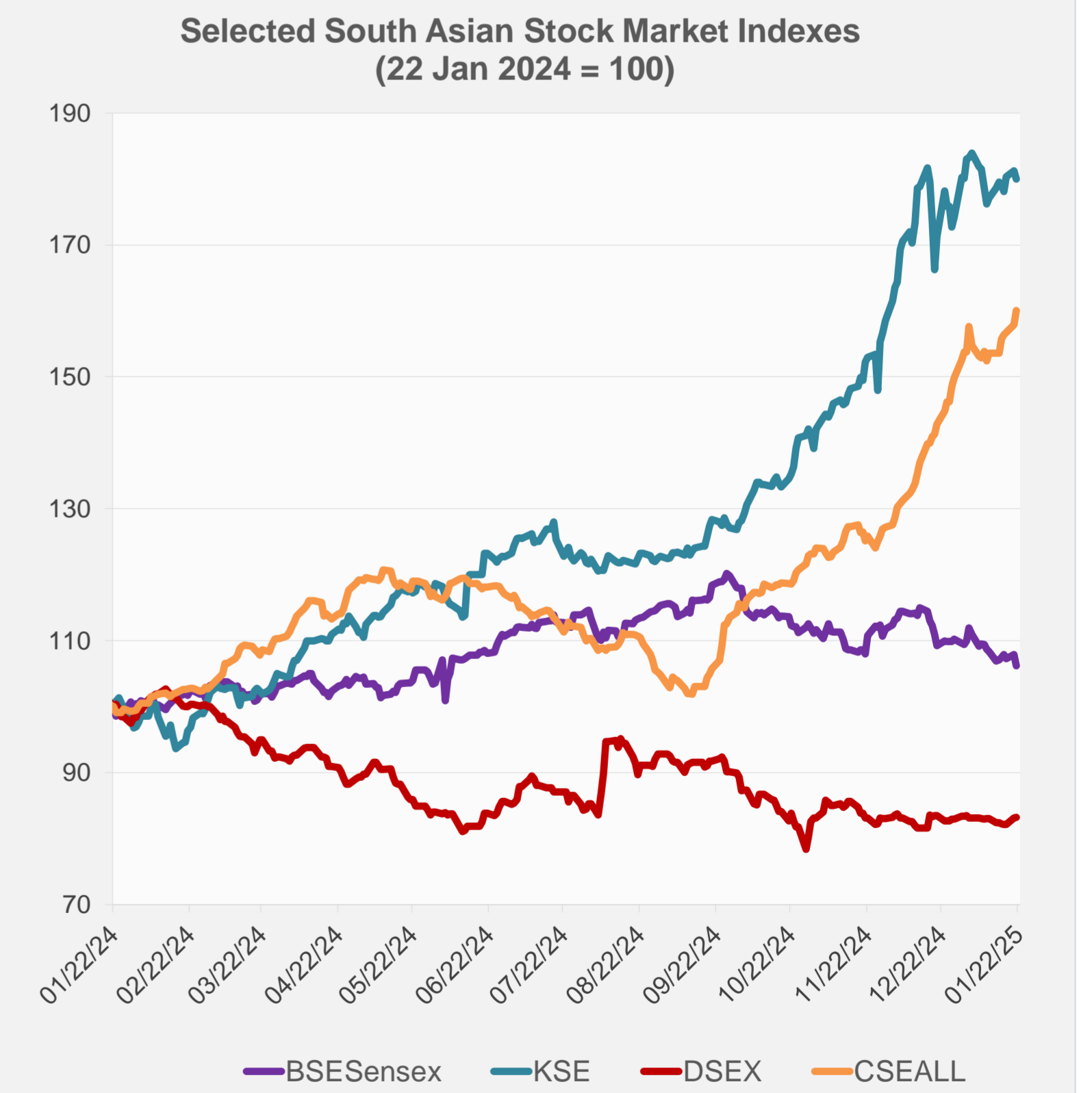
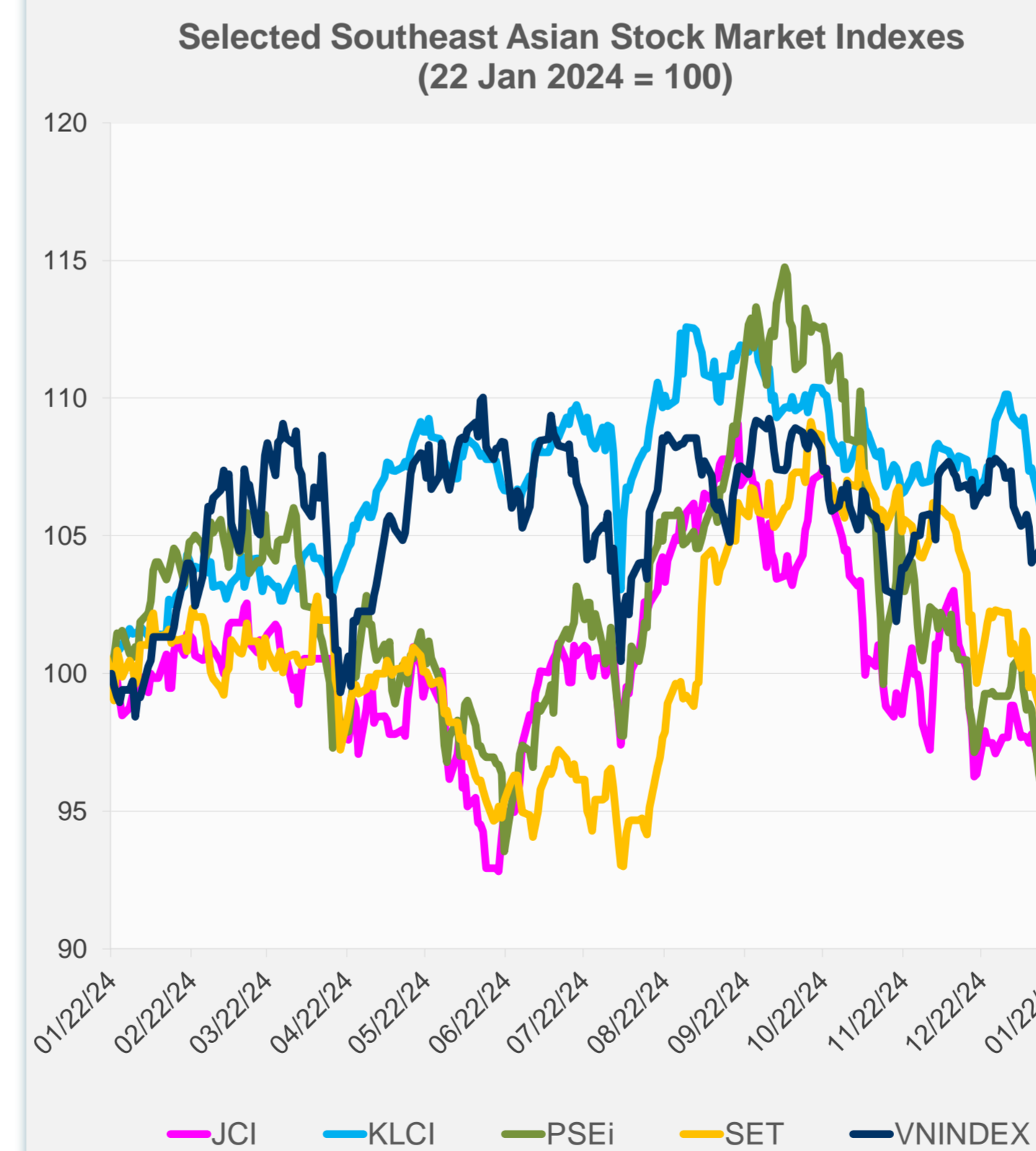
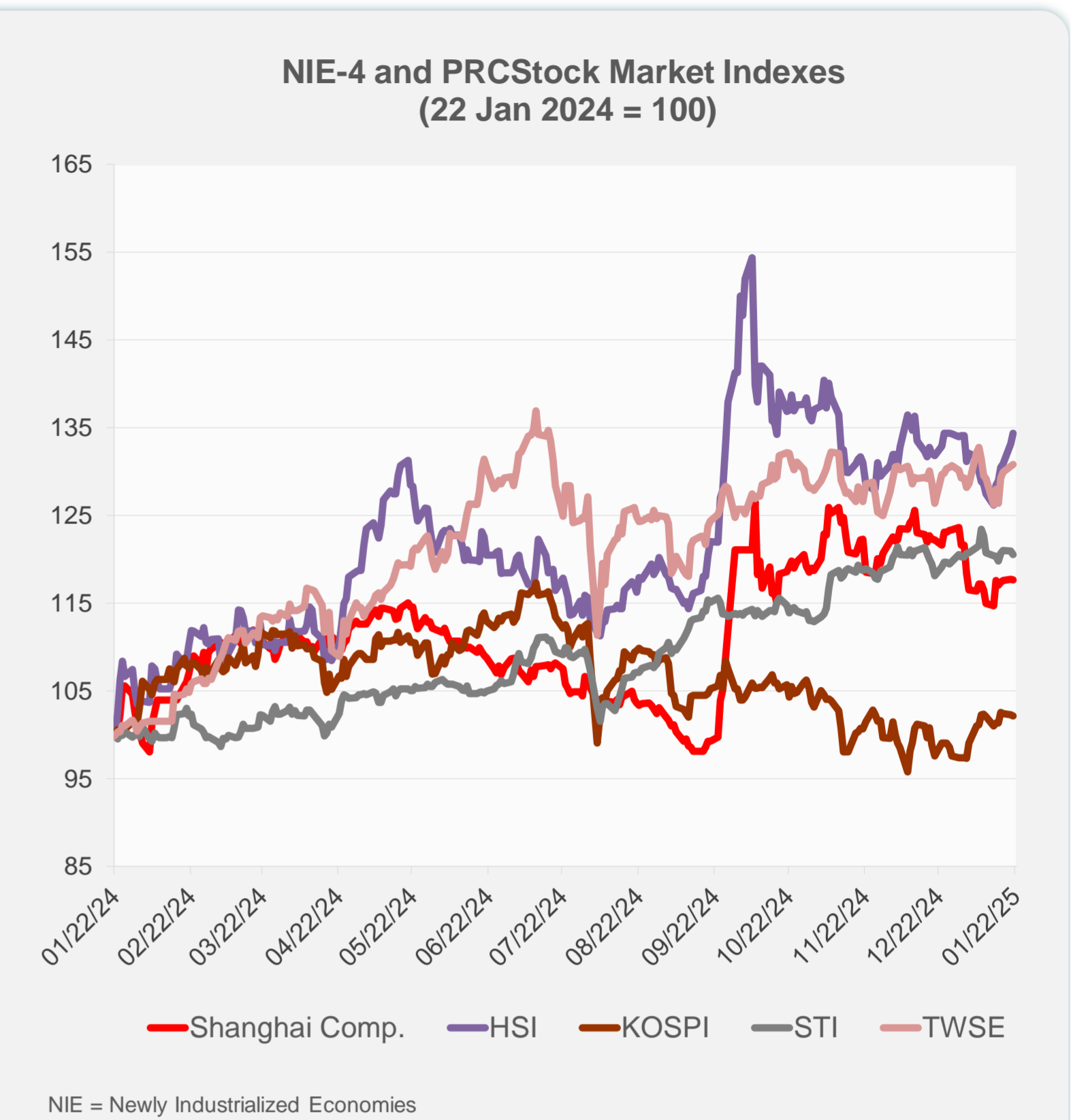
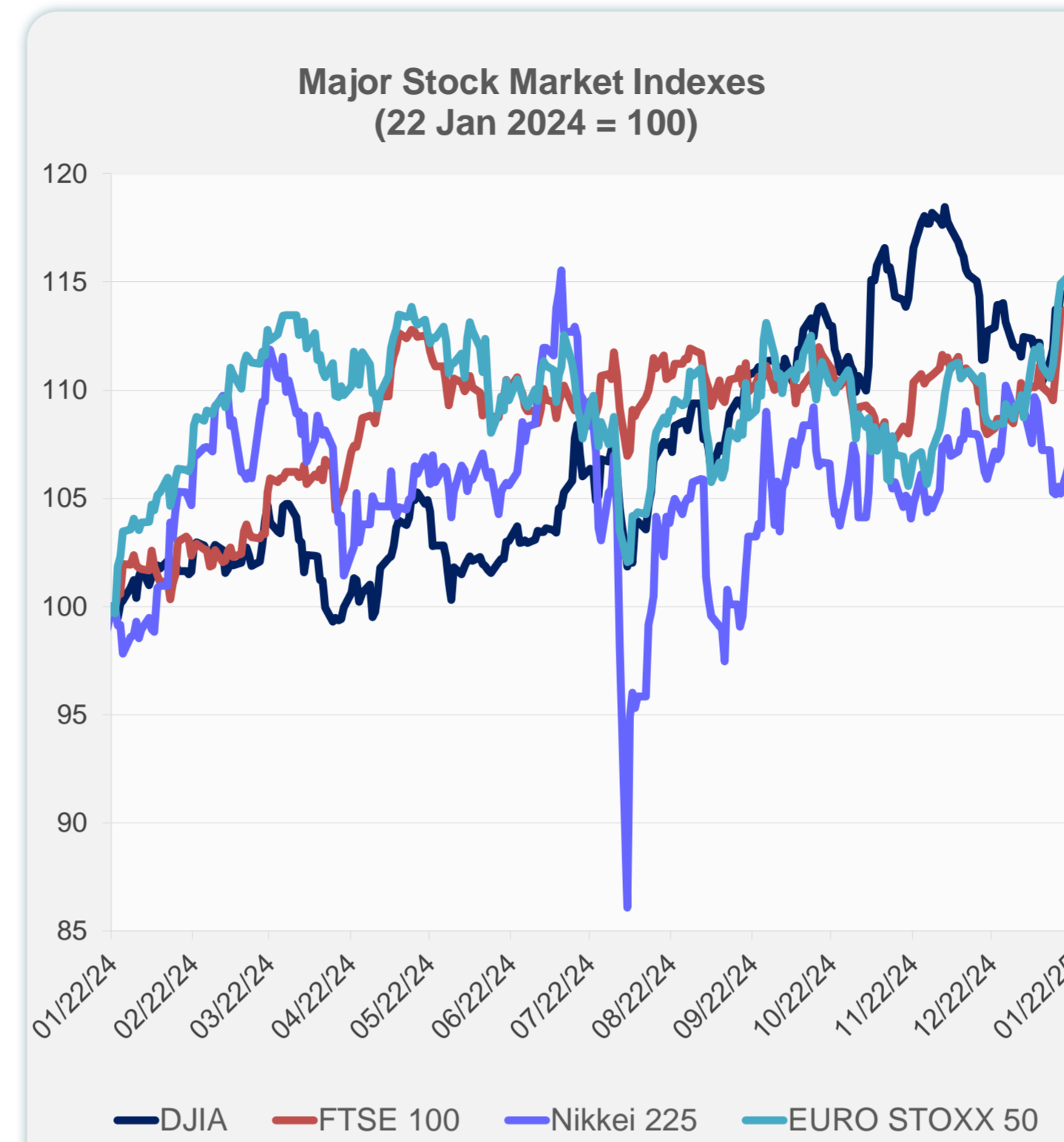


Source: Haver Analytics.

Daily Market Watch  
**STOCK INDEXES**

22 January 2025, 9:00 AM Manila

	Latest Closing	% change from Previous Day	% change from 01-Jan-25
US Dow Jones Ind Avg	44,025.81	1.24	3.48
US NASDAQ	19,756.78	0.64	2.31
US S&P 500	6,049.24	0.88	2.85
UK FTSE 100	8,548.29	0.33	4.59
EURO STOXX 50	5,165.96	0.03	5.51
Japan NIKKEI 225	39,027.98	0.32	-2.17
Bangladesh DSEX	5,202.62	0.13	-0.30
PRC Shanghai Comp.	3,242.62	-0.05	-3.26
Hong Kong, China HSI	20,106.55	0.91	0.23
India BSE Sensex	75,838.36	-1.60	-3.40
Indonesia JCI	7,181.82	0.15	1.44
Korea, Rep. of KOSPI	2,518.03	-0.08	4.94
Malaysia KLCI	1,580.46	0.52	-3.77
Pakistan KSE 100	115,042.25	-0.69	-1.68
Philippines PSEi	6,340.21	-0.15	-2.89
Singapore STI	3,795.37	-0.33	0.21
Sri Lanka CSEALL	16,597.16	1.37	4.09
Taipei, China TWSE	23,300.01	0.14	1.15
Thailand SET	1,352.53	0.90	-3.41
Viet Nam VNINDEX	1,246.09	-0.28	-1.63



Sources: ADB calculations using data from CEIC Data Company and Haver Analytics.



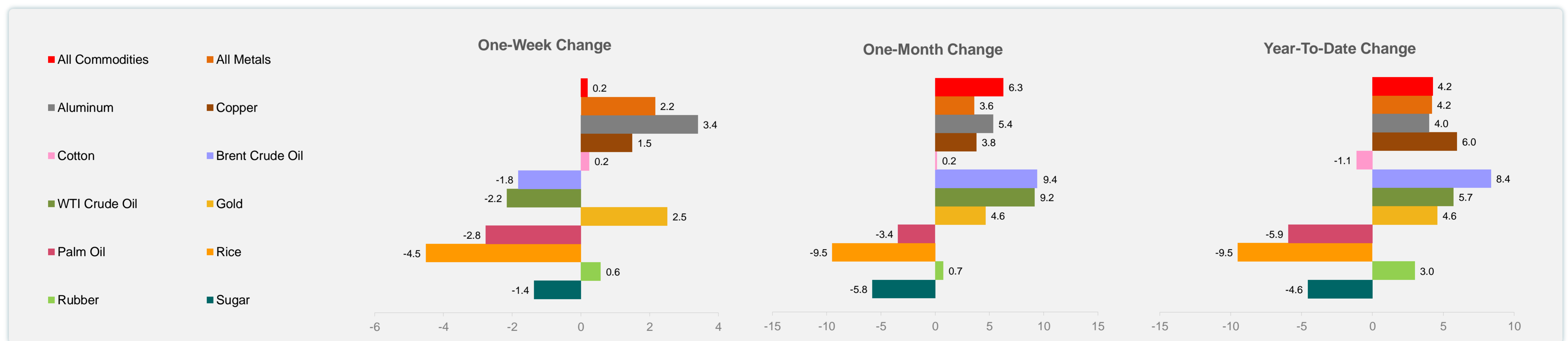
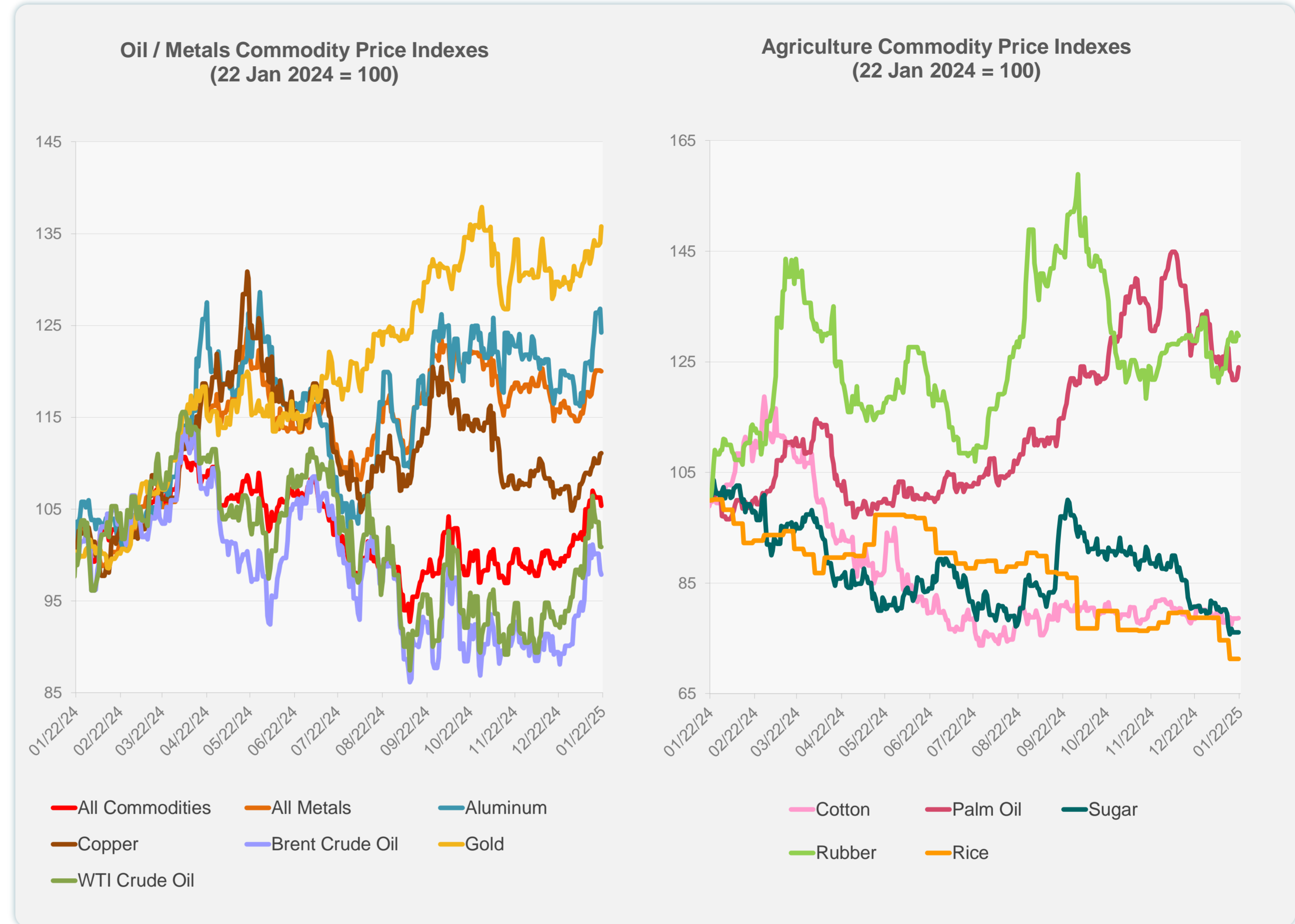
Sources: CEIC Data Company and Haver Analytics.

Daily Market Watch  
**COMMODITY PRICES**

22 January 2025, 9:00 AM Manila

	Unit	Latest Closing	% change from Previous Day	% change from 01-Jan-25
S&P All Commodities	US\$	572.99	-0.86	4.25
S&P All Metals	US\$	320.26	-0.10	4.19
Aluminum	US\$/metric ton	2,628.18	-2.02	4.01
Copper	US\$/metric ton	9,168.88	0.06	5.97
Cotton	US cents/lb	65.16	0.09	-1.12
Brent Crude Oil	US\$/barrel	80.31	-0.47	8.37
WTI Crude Oil	US\$/barrel	75.83	-0.08	5.73
Gold	US\$/troy oz	2,744.81	1.35	4.58
Palm Oil	US\$/metric tonne	1,034.74	1.55	-5.94
Rice <sup>1</sup>	US\$/metric ton	486.00	0.00	-9.50
Rubber <sup>2</sup>	US\$/kg	243.90	-0.41	3.00
Sugar	US cents/lb	17.37	0.00	-4.56

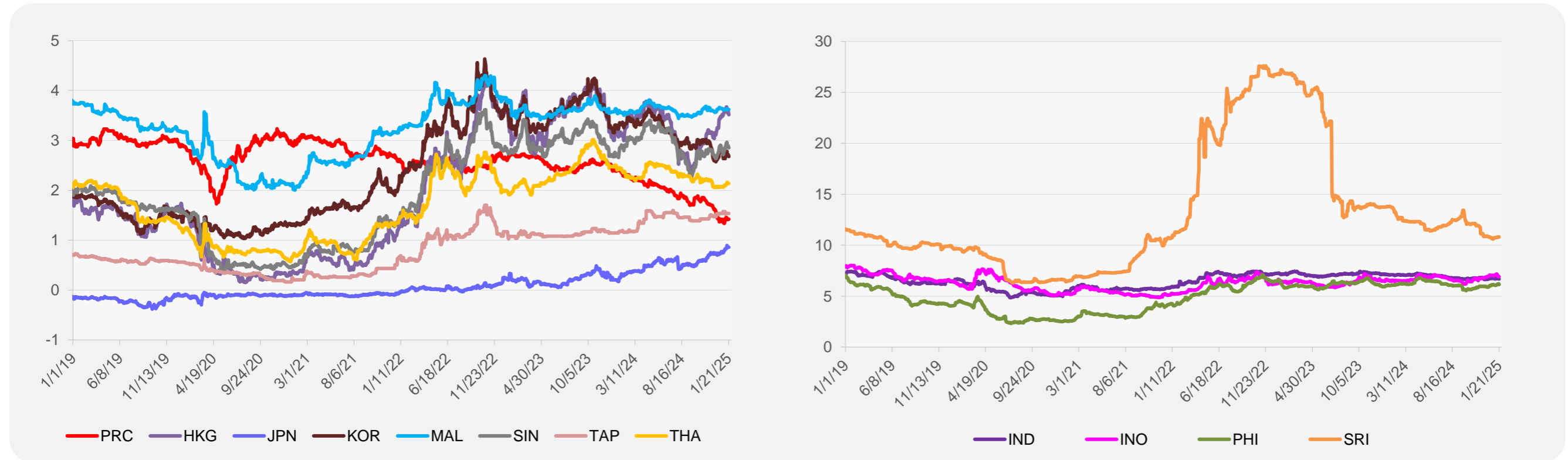
<sup>1</sup> Latest closing price from 15 January 2025.  
<sup>2</sup> Singapore Exchange, Ribbed Smoked Sheet Rubber.



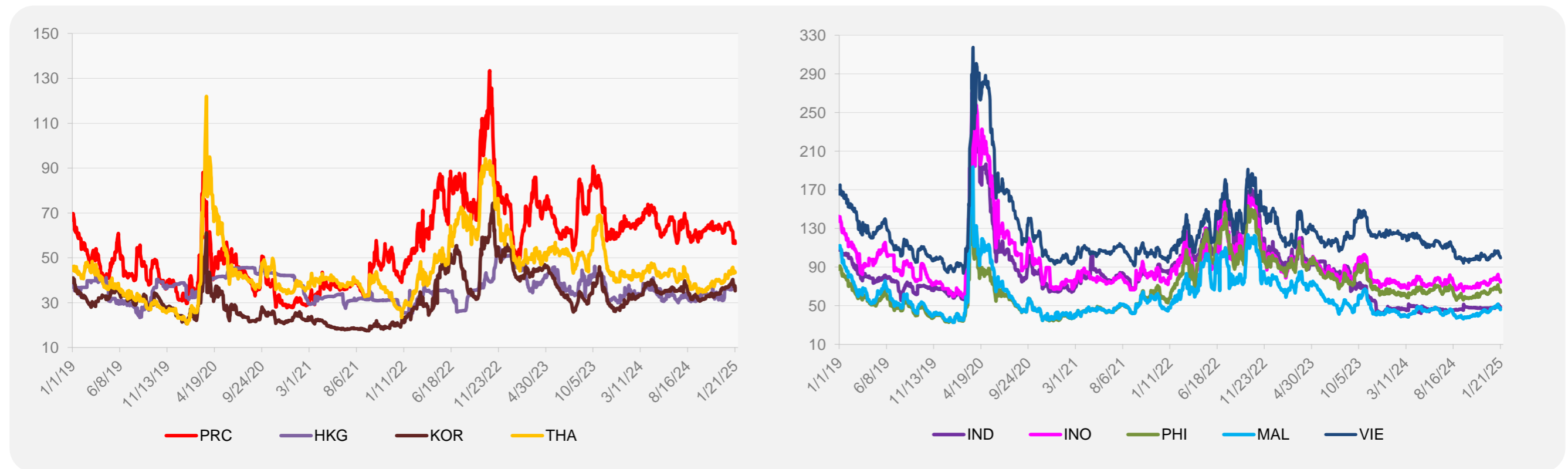
Source: ADB calculations using data from Bloomberg.

ASIA REGIONAL INTEGRATION CENTER  
Regional Cooperation and Integration Division (ERIC)  
Economic Research and Development Impact Department (ERDI)

### 5-YEAR LOCAL CURRENCY GOVERNMENT BOND YIELDS (%)



### 5-YEAR CREDIT DEFAULT SWAP<sup>1</sup>



<sup>1</sup> In USD and based on sovereign bonds.  
Source: ADB calculations using data from Bloomberg.